



KOTOBUKI SEATING CO.,LTD.

Capsule Department

1-2-1, Kanda Surugadai, Chiyoda-ku, Tokyo 101-0062, Japan

Phone: +81-3-5280-5606 Fax: +81-3-5280-5775

[www.kotobuki-seating.co.jp](http://www.kotobuki-seating.co.jp)



00346-01\_NIS190302

# SLEEPING CAPSULE



K•O•T•O•B•U•K•I



Contents

- 1 | a-Style Shinsaibashi
- 4 | MyCube by Mystays Asakusa Kuramae
- 6 | Shell Nell Namba by WBF
- 8 | New Japan Capsule Hotel Cabana
- 9 | New Japan Ladies Capsule Hotel
- 10 | Kanazawa Capsule Hotel Musashimachi
- 12 | Nihombashi Muromachi Bay Hotel
- 14 | Tube Sq
- 16 | Hotel M Matsumoto
- 18 | Hotel Matsuya
- 19 | Fujikyu Unjokaku
- 20 | Glansit Akihabara
- 22 | Nadeshiko Hotel Shibuya
- 24 | The Lodge Moiwa 834
- 26 | Nine Hours Shinjuku-North
- 28 | SoftBank Omiya Center Nap Room
- 29 | Keikyu Corporation Shinagawa Station Nap Room
- 30 | Capsule Trailer House



Modular Slumber  
*Capsule-bed tableaux*

Urban hotels and mountain lodges, and nap rooms at airports and train stations, at corporate workplaces, and at the scenes of natural disasters

a-Style Shinsaibashi, a capsule hotel for women in Osaka



a-Style Shinsaibashi

- Location\_Minami-Semba 4-12-10, Chuo-ku, Osaka
- Owner\_ACN Inc.
- Design\_Hara Design Office (building) and Deluxe Double Design Co., Ltd. (interior)
- Opened\_December 2016
- Beds\_152



Serving women exclusively and focusing on that customer stratum in design, operation, and promotion has proved a highly successful business strategy for this hotel in central Osaka. Meanwhile, the hotel has cultivated repeat guests by offering a choice of options, such as standard or wide (desk-equipped) capsules, with or without television, and front- or side-opening entry. Each capsule has a wall mirror, and the richly equipped powder room and shower rooms offer a diversity of choice in such amenities as makeup remover, toilet water, shampoo and hair conditioner, and face and body soap. Facial massagers and moisturizers are even available.





MyCube by Mystays Asakusa Kuramae

• Location\_Kuramae 2-6-7, Taito-ku, Tokyo • Owner\_Mystays Hotel Management Co., Ltd.  
• Opened\_June 2016 • Beds\_161



Just minutes away by subway from this capsule lodging are the temples and shrines and the shops and restaurants of Tokyo's famed Asakusa enclave of Edo-period tradition. Back at the hotel, guests can regroup in the bar lounge or in the restaurant. Awaiting all come slumber time are private chambers on the separate floors for men and women. Each bedroom stretches above a storage bin for luggage and has a flat-panel television, personal cabinet, safe, electrical outlet, USB port, and Wi-Fi access. Right down the hall are shower and toilet facilities.



Shell Nell Namba by WBF

▪ Location\_Nihombashi 2-9-16, Chuo-ku, Osaka ▪ Owner\_White Bear Family Co., Ltd. ▪ Design\_Archvision Hirotani Studio Co., Ltd.  
▪ Opened\_April 2016 ▪ Beds\_96



Lodgers at this stylish hotel in Osaka’s popular Namba district enjoy a choice of standard or desk-equipped, deluxe configurations. The women’s floors offer even a twin-bed option for sharing capsules with same-sex friends or family members. Each module is fully equipped with adjustable lighting, an electrical outlet, and a USB port. Bathrobed guests can enjoy drinks and snacks and conversation in the lounges, and a café on the first floor serves breakfast.





New Japan Capsule Hotel Cabana

▪ Location\_Dotombori 2-3-28, Chuo-ku, Osaka ▪ Owner\_New Japan Co., Ltd. ▪ Design\_HiGe Creative Partner Co., Ltd.  
▪ Opened\_July 2014 ▪ Beds\_80



This Namba, Osaka, hotel is an urban oasis for men older than 18. It combines capsule sleeping accommodations for napping or overnight stays with a 24-hour fitness gym and spa, including a sauna and massage service. An on-site restaurant serves breakfast. Each capsule has a television, electrical outlet, and Wi-Fi access.

New Japan Ladies Capsule Hotel

▪ Location\_Dotombori 2-3-28, Chuo-ku, Osaka ▪ Owner\_New Japan Co., Ltd.  
▪ Design\_Kamiya Design Inc. ▪ Opened\_April 2017 ▪ Beds\_20



The popularity of the New Japan Capsule Hotel Cabana (*facing page*) prompted the owner to open a sister hotel for women nearby. Like its men-only predecessor, the New Japan Ladies Capsule Hotel sports a fully equipped spa and fitness gym, along with lounge and a breakfast restaurant. It also has a powder room. The clientele includes, as well as travelers, guests who live nearby but come with friends for the fun of overnight stays at an urban spa.





# Kanazawa Capsule Hotel Musashimachi

- Location\_Musashimachi 1-17, Kanazawa, Ishikawa
- Owner\_Alpenmura Co., Ltd. ▪ Design\_Okamura Design Co., Ltd.
- Opened\_July 2017 ▪ Beds\_120



Musashimachi is a nightlife center of the city of Kanazawa, a regional hub on the Japan Sea coast. Kanazawa Capsule Hotel Musashimachi occupies a remodeled six-story building that formerly housed a large pot sticker restaurant. The second floor is for women only; the fourth, fifth, and sixth floors are for men only; and the third floor is available for either men-only or women-only accommodation as required by fluctuations in demand. A façade of wooden latticework and further styling inside, including tatami-mat floors throughout, impart a traditional ambience that is popular with guests of all nationalities. The guests have a choice of with or without television beside their beds, and all of the sleeping modules have free Wi-Fi access.





Nihombashi Muromachi Bay Hotel

• Location\_Nihombashi Honcho 2-4-7, Chuo-ku, Tokyo • Owner\_CVS Bay Area Inc. • Design\_Toazu Inc.  
• Opened\_January 2016 • Beds\_236

Excellent access to Ginza, Asakusa, Tokyo Station, and other sites of importance to travelers is a selling point for this “Japanese-modern” hotel in central Tokyo. Each of the men-only floors two and three and the women-only floors four and five includes

shower, toilet, locker, and lounge facilities, as well as sleeping units. Larger lounges are available beside the reception desk on the first floor and in the basement. Guests on every floor have a choice of sleeping units with or without television.







# Tube Sq

▪ Location\_Chubu International Airport Passenger Terminal Building, 1F, Centrair 1-1, Tokoname, Aichi  
▪ Owner\_Tube Inc. ▪ Design\_Shinsei Toshi Sekkei Co., Ltd.  
▪ Opened\_April 2017 ▪ Beds\_138



Chubu International Airport is a 24-hour hub near Nagoya, and Tube Sq provides 24-hour accommodation for sleepy travelers, whether they are seeking a quiet nap or overnight slumber. The hotel is on the first floor of the terminal building and just an escalator ride away from the departure and arrival lobbies. All of the airport's ground transport options are, of course, readily accessible. The hotel comprises male and female wings on either side of the reception desk, and each wing accompanies its sleeping units with a full complement of shower, toilet, and locker facilities.



Hotel M Matsumoto

▪ Location\_Fukashi 1-3-11, Matsumoto, Nagano ▪ Owner\_Tomioka Kaihatsu Co., Ltd. ▪ Design\_MKK Co., Ltd.  
▪ Opened\_July 2016 ▪ Beds\_86



A six-story building formerly occupied by an outlet of Matsumoto's venerable Inoue Department Store became available when Inoue closed the outlet. The building was reborn in 2014 as a commercial complex, and Hotel M Matsumoto opened on the top floor two years later. Just a three-minute walk from Matsumoto Station, the location is ideal for business travelers and budget-minded tourists. The hotel comprises men's and women's wings. Each wing offers a combination of capsule units and conventional rooms, and the capsules are available in deluxe configurations that include bedside desks and in standard, bed-only configurations.



Hotel Matsuya

- Location\_ Sakae 173-1, Iwanai-cho, Iwanai-gun, Hokkaido
- Owner\_Rest Plaza Matsuo Co., Ltd. • Design\_Re-Fine Act Co., Ltd.
- Opened\_April 2016 • Beds\_12



Iwanai-cho sprawls beneath the Niseko peaks on the Japan Sea coast of western Hokkaido. Hotel Matsuya occupies a remodeled building that formerly housed government offices. It is a hybrid of capsule sleeping units on the first floor and, on the second floor, tatami-mat rooms for sleeping on futon and carpeted rooms equipped with cots. Its deluxe capsule units have desks beside the beds and ceilings high enough to allow adult occupants to stand upright. The hotel boasts large baths and sauna rooms.

Fujikyu Unjokaku

- Location\_ Fujisan 8545-1, Narusawa-mura-aza, Minami-Tsuru-gun, Yamanashi • Owner\_Fujikyuko Co., Ltd.
- Opened\_July 2014 • Beds\_42



The passenger train operator Fujikyuko (Fuji Express) operates the Fujikyu Unjokaku capsule hotel on the north flank of Fujisan. Its hotel is the result of remodeling an aging mountain lodge on the modular format. Reborn as a capsule hotel, the lodge

continues to serve climbers on their way up and down the iconic volcano and tourists who simply come to gaze at the summit. It includes a shop that dispenses snacks and box lunches, as well as sleeping units and showers.



# Glansit Akihabara

- Location\_ Soto-Kanda 4-4-6, Chiyoda-ku, Tokyo • Owner\_ Bagus Co., Ltd.
- Design\_ Hagiwara Architectural Design Co., Ltd. (building), and Glamorous Co., Ltd. (interior)
- Opened\_ October 2017 • Beds\_ 128

This 10-story capsule hotel is just a three-minute walk from JR Akihabara Station in a central-Tokyo district known for electronic goods and cultural-trend harbingers. The facilities exhibit the purpose-built efficiency and amenity of a hotel created from the ground up. Floors 2 to 9, separate for men and women, house the sleeping capsules, which offer a choice of

standard, deluxe, and twin configurations. Each capsule has a television, an electrical outlet, a USB port, and free Wi-Fi access. The deluxe and twin capsules include a side desk and locker. Glansit Akihabara has expansive bathing facilities, lounges, and smoking rooms on the 10th (women) and basement (men) floors.





- Location\_Shinsen-cho 10-5, Shibuya-ku, Tokyo ▪ Owner\_USEN Corporation ▪ Design\_Design Holder Co., Ltd.
- Opened\_April 2016 ▪ Beds\_24

*Nadeshiko* refers to the dianthus flower, a symbol of femininity in Japan, and Nadeshiko Hotel Shibuya caters exclusively to women. Its location offers ready access to bustling Shibuya, to fashionable Omotesando, to youthful Harajuku, and to relaxing Yoyogi Park. Traditional Japanese themes prevail throughout the interior, as in the red-Fuji mural above the large communal

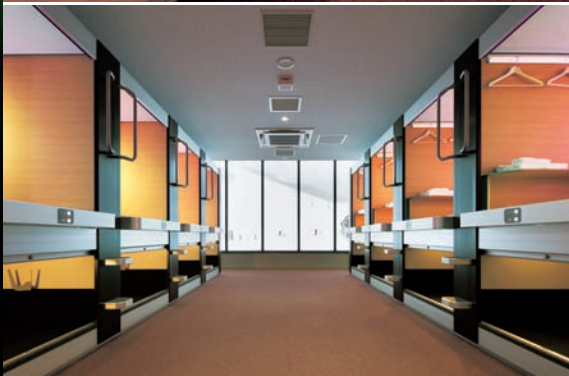
bath, the cypress-wood bathtub for individual soaking, the tatami-mat lounge, the *yukata* cotton gowns, the ukiyo-e window screens, and the Japanese restaurant on the first floor. Broad halls on the two sleeping floors allow for sitting outside the capsules to sort personal effects. Each capsule has LED illumination, an electrical outlet, and a USB port.







**The Lodge Moiwa 834**  
▪ Location\_Niseko 448, Niseko-machi, Abuta-gun, Hokkaido ▪ Owner\_Moiwa Resorts Operations LLC ▪ Design\_Jones Lang LaSalle K.K.  
▪ Opened\_December 2014 ▪ Beds\_96



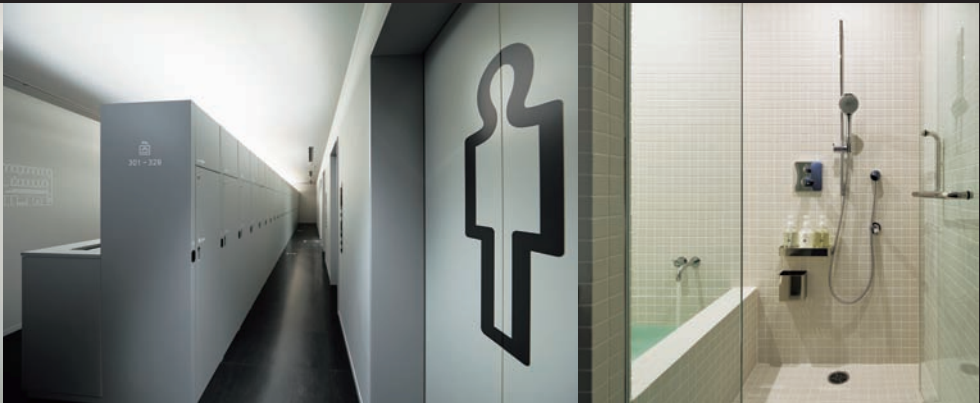
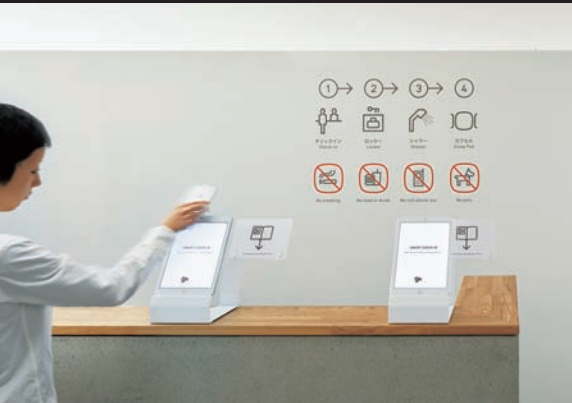
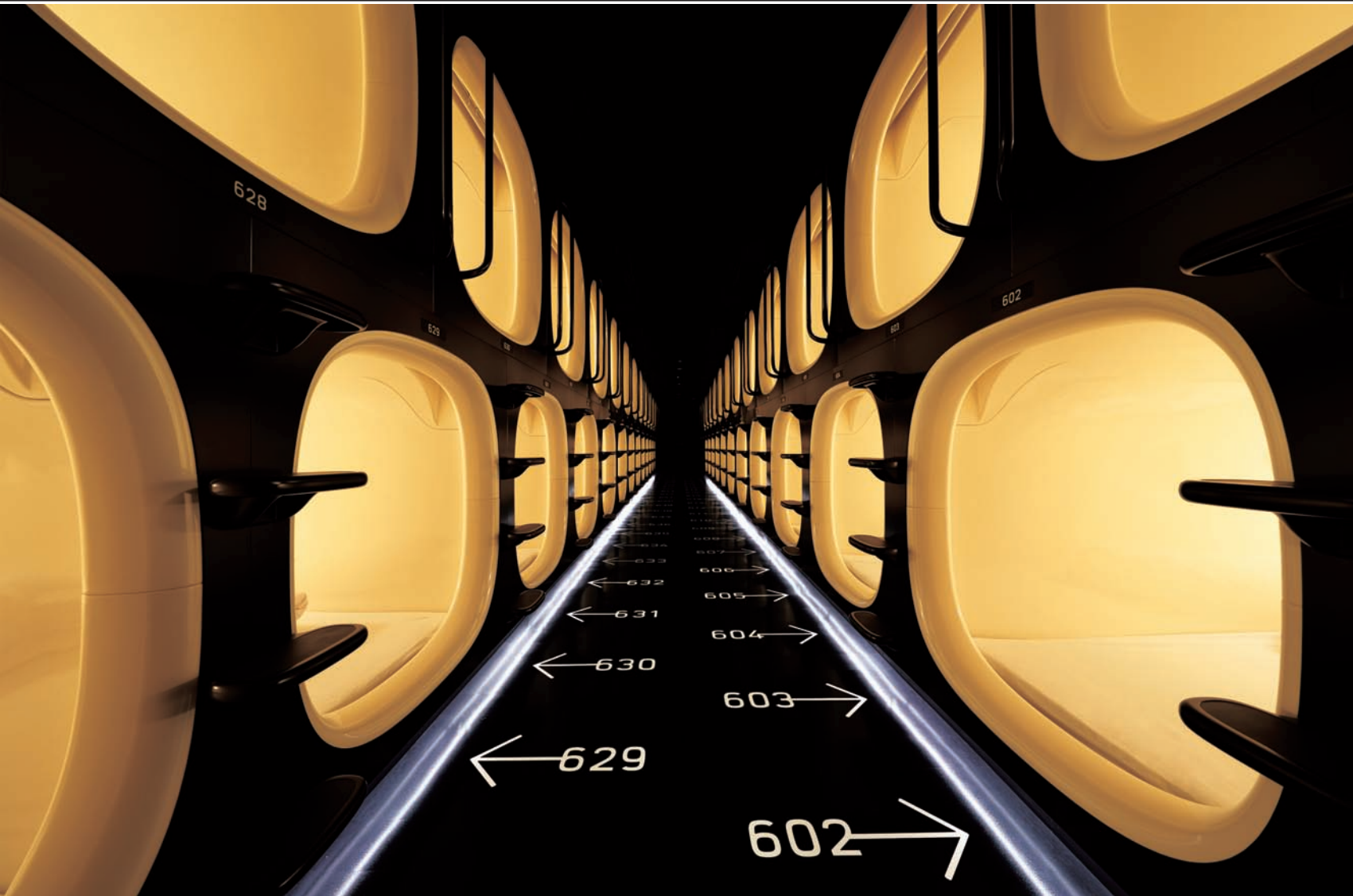
Extended stays are the norm at this lodge, which stands beneath the Niseko Moiwa Ski Resort. The beds are larger than the Japan-standard size to serve the resort's international clientele, and the facilities and hospitality maintain an "at-home" feel over any number of nights. Guests enjoy a combination of

capsule privacy for sleeping and reading and shared areas for dining and chatting. Each capsule includes a storage bin for luggage beneath the bed, an electrical outlet, a retractable bed, a hangar rack, and a password-protected safe. Customizable LED illumination lets occupants choose their own color schemes.



Nine Hours Shinjuku-North

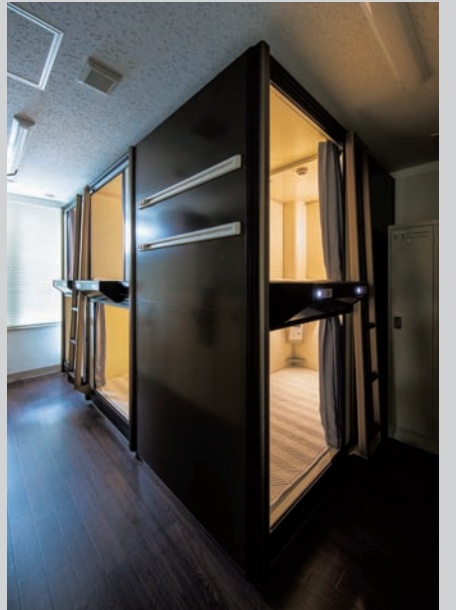
- Location\_Hyakunincho 1-4-15, Shinjuku-ku, Tokyo
- Owner\_B-lot Co., Ltd. ▪ Design\_Fumie Shibata, Design Studio S (creative direction and product design); Masaaki Hiromura (signage and graphic design); Takaaki Nakamura (interior)
- Opened\_March 2017 ▪ Beds\_206



Chic signage steers lodgers through the snugly, cocoon-like capsules and other facilities in the high-tech ambience of Nine Hours Shinjuku-North. This is the fourth entry in the Nine Hours series, which also includes hotels in Kyoto, Narita, and Sendai. It occupies the upper six floors of an eight-story building in Tokyo's bustling Shinjuku subcenter. Floors three to six house capsules and lockers, floor seven rows of private shower stalls, and floor eight the reception desk and a lounge. The sleeping floors and the shower facilities divide by gender. A large table in the lounge allows for taking in views of the city below while partaking of snacks and conversation. Twelve booths along the wall provide electrical outlets for working on laptops, and a printer-copier is available at the reception desk.







## SoftBank Omiya Center Nap Room

- Location\_Omiya-ku, Saitama, Saitama • Owner\_SoftBank Corp.
- Opened\_June 2014 • Beds\_16



SoftBank's Omiya Center is a relay station for the mobile-telephony territory north of Tokyo. Hundreds of employees work at the center, which operates 24/7, and comfortable napping capacity was a must-have feature in designing the facility. The modular convenience of capsule units has been a perfect fit there.

Shinagawa is an important terminal for the commuter line operator Keikyu Corporation. Keikyu upgraded its bunk bed nap room there with capsule beds to provide employees with more privacy during breaks and to accommodate its growing team of women in career positions. Opaque curtains allow users to shut out the sunlight for daytime napping.







# Capsule Trailer House

- Owner\_Arnest One Corporation
- Design\_Arnest One Corporation
- Opened\_June 2016 ▪ Beds\_8



# Capsule Trailer House

- Owner\_Arnest One Corporation
- Design\_Arnest One Corporation
- Opened\_June 2016 ▪ Beds\_8



Capsule beds have taken a place in the mobile-housing response to natural disasters. They can render service in ordinary times as lodging for such purposes as emergency-response training, company workshops, and school field trips and spring into action as emergencies require. The unit shown provided rest for individuals who built temporary housing for victims of the Kumamoto earthquake of 2016.







#### Photo Credits

Nacasa & Partners\_pp. 26–27

Yasuyuki Sugiura\_pp. 10–11

Katsuhiko Murata\_cover, pp. 1–9, 12–25, 28–32

#### Editorial Design

Shigeru Orihara (O design)